



FITTING INSTRUCTIONS FOR THE BOSS LA-87 AIR SUSPENSION ASSIST KIT

Safety First! Please make sure you have read the Safety recommendations supplied with your Kit

- 1 Check you have the right kit for the right vehicle. The vehicle make and type is printed in the top left hand corner.
- 2 When jacking the vehicle up, secure vehicle in a safe way with Jack/Axle stands under the chassis.

NOTE – SOME VARIANTS HAVE WIDER BUMP STOP MOUNTS. YOU MIGHT HAVE TO DRILL A HOLE TO SUIT STANDARD MOUNTING. SEE PIC ASSEMBLING THE AIR BAGS

Assemble the Airbags by bolting on the top and bottom end plates to the alloy rings on the air bags with the 6 threaded nuts and bolts and spring washers (top and bottom) supplied in the kit. It's important to make sure you leave the 6 bolts on each end just loose enough to be able to twist the plate around on the bag to allow for final alignment adjustment during the fitting process. (See the red arrows on the diagram)

FITTING BAGS TO THE VEHICLE (Do one side of the vehicle at a time)

Jack one side of the vehicle up and place jack stand underneath for safety.

- 1 Locate the Vehicle bump stop and remove it from the chassis.
- 2 Fit each end plate to the Airbag but leave the bag bolts loose.
- 3 Loosen lower spring U bolts on the vehicle axle enough to slide the bag assembly in place.
- 4 Slide the bag assembly (lower bag bracket) into place under the loosened U bolts on the bottom, and slide the top bracket into place lining it up with the bump stop holes. Before you tighten the bolts make sure that the air hose connector is accessible.
- 5 To help with bracket alignment, you can rotate the end plates (top and bottom brackets) on the rubber bag (See red arrows on diagram).
- 6 When you have the bag assembly in its correct position, ie bottom bracket under the U bolt and the top bracket in its correct position with the bump stop holes lined up, the next step is to bolt the end plates to the bag leaving the 1-2mm gap.
- 7 Re-tighten both the U bolts and bump stop nuts to the factory specifications.

Important Note; Once you have fitted and adjusted the bags and rings, tighten the Bag Bolts (the 6 threaded bolts between the end plate brackets and the alloy bag ring) leaving approximately **1 - 2mm** gap between the two plates. When bolting the plates to the airbags, tighten the bolts up in a similar way to how you do wheel nuts up on a car. Do the bolts up evenly moving from one side of the plate to the other as shown on the diagram over the page. Make sure the gap is even all the way around. Do not over tighten as this can cause leaks. That's all there is to it!

HELPFUL HINTS

- 1 If you have a problem with air leaking around the alloy ring area meets the Airbag, loosen the 12 bag bolts and rotate the bag 90-180 degrees, this will allow the Airbag seal to sit in different position on the end plates and reseal.
- 2 The alloy ring is designed to bite into the bag bellow to seal it, that's why its important to tighten bolts as mentioned above
- 3 **When installed, initially inflate to 80-100psi and then reduce pressure to "normal" before using** ("normal" varies depending on vehicle and load etc., and you will find what is right for you). This is important to allow the rings to "bite" into the rubber and give a good seal.

AIR LINE & FITTINGS

1. Keep air fittings free from dirt during assembly
2. Mount the Schrader valve unit (Air valves) in a convenient accessible location
3. **Keep the airline at least 100 mm away from the exhaust systems**
4. Make sure the airline has a clean straight cut free of burrs on the edges and don't squash the line (see the diagram over page)
5. To fit the air hose into the fitting simply push the airline **firmlly** into the air fitting because that activates the seals. The lock claws will automatically grab the tubing and the elastic sleeve surrounding the airline seals the tube. Now, give a short sharp tug on the line to make sure it is seated.
6. Inflate the system and check for leaks using very soapy water, you're looking for active bubbling indicating a leak.
7. If leak is found at the fitting, remove the airline from the fitting and trim the airline and refit and retest.
8. Do NOT use any thread tape, sealant, oil, grease, or any other substance on the airline when inserting it into the air fitting. It will cause a leak.
9. Zip Tie the line to the chassis
10. Install your door decal onto your Door Jam and you're finished

Safety First

The airbags are intended to help the vehicle maintain a level and safe stance when legally loaded. Do not exceed the factory GVM rating.

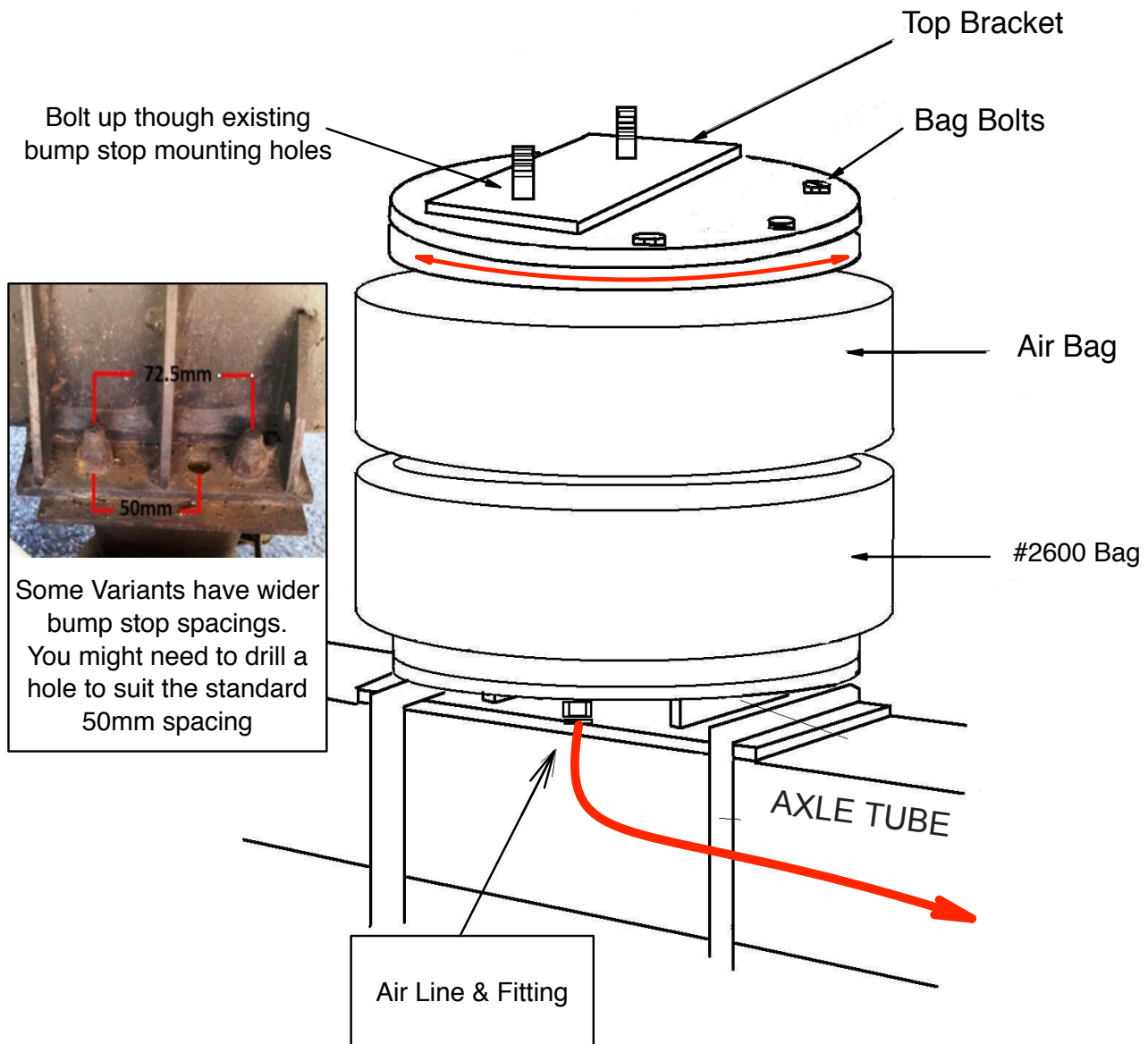
If you exceed the factory GVM or overload your vehicle you run the possibility of damaging your chassis.

Do not inflate bags above 200psi and do not drive with bag bottomed out.

When retightening any factory fitted bolts such as U Bolts make sure you tighten them to the vehicle manufacturers torque specification. If you are uncertain about the specification contact your vehicle manufacturer or dealer for details. Note: Replace your U bolts if they appear damaged. No responsibility whatsoever is accepted for the fitment of incorrect parts. The onus is clearly with the fitter to ensure the correct parts are used and those parts are correctly fitted to the particular job. Any damage to parts or consequential damage or cost resulting from the fitment of incorrect parts or fitment are totally the responsibility of the fitter.

Now you can pump up and enjoy your ride with BOSS. Thanks again for choosing a BOSS Air system.

TOYOTA COASTER LA-87 LOAD ASSIST KIT



- 1 - Assemble the airbag kit as shown in the picture. You can Rotate the Bracket and the silver ring on the bag prior to tightening the 6 bag bolt.
You will need to do this for bracket alignment. Ref Red Arrow On Bag
- 2 - Remove the Bump stop from the Chassis
- 3 - Installing one side at a time, Support the Vehicle with Axle stands and carefully loosen the U Bolts enough to slide in the Bag assembly.
- 4 - Fasten top Bracket and re-tighten U Bolts to factory Specifications.
- 5 - Repeat for the other side.
- 6 - Run the Airlines and fit the Schrader. Be sure to cut the line with supplied tube cutter. Zip tie all lines to secure